



Project Development Company





**EASYWATCH** is an independent applied investigation and consultancy company with interdisciplinary expertise, mainly in the fields of Geo-Environment, Applied Geology, Mineral Exploration and Mineral Resource Evaluation.

**EASYWATCH** is actively pursuing growth through strategic opportunities, including consultancies, investments, acquisitions, joint ventures and asset consolidations. The company evaluates and pursues opportunities that bring synergy to any viable ventures.

**EASYWATCH** management team, following an evaluation of future global needs on strategic minerals, is expanding its activities in mineral exploration and resource development to mine reclamation and closure, respecting environmental concerns, and the needs of local communities for better living conditions.

**EASYWATCH** provides high level professional services for public and private sector organisations in the following fields:

- Study of the natural environment (air, water, land) in relation to end land use, and environmental impact assessment of human activities and natural phenomena
- Hydrogeological surveys and Water resources evaluation and management
- Ground water investigations, and evaluation of quality and quantity
- Geotechnical investigations to solve surface and sub-surface problems concerning dams, sanitary landfills, wastewater treatment plants, etc.
- Evaluation of contamination in soil, sediment and water, due to 'natural' or anthropogenic sources (e.g., mineralised areas, solid waste landfills, industrial areas, urban and suburban areas, etc.)
- Environmental impact assessments and Specialised Environmental studies

- Investigation of agricultural soils in relation to their end-use
- Mineral exploration for base metals, gold, rare earth elements, etc.
- Applied geochemical surveys for mineral exploration
- Applied geophysical surveys for mineral exploration
- Mineral resource evaluation
- Subsurface investigations by geophysical methods for the location of buried objects, such as pipes, antiquities, etc.
- Sub-bottom profiling, using shallow and deep geophysical methods with specialised equipment (echo sonar, seismograph) for geological formations mapping, delineation of mineral exploration targets and sampling with robotic systems for identifying potential pollution
- Compilation of seismological and geological reports according to the specifications of urban planning programmes
- Digital processing of geological and other geoscientific data (e.g., geochemical, geophysical, hydrogeological, geotechnical)
- Design and production of training material for multimedia applications.

**EASYWATCH** and its associated partners:

- Offer a high level of professional consulting services according to customer demands.
- Collaborate with the customer during the planning stage and provide all required support in matters related to the specific project.
- Update their professional services by integrating emerging technologies in the fields of their expertise.



Geotechnical engineering survey for the construction of a sanitary waste disposal site, a reservoir and a water dam for the Municipality of Milos Island



Geotechnical engineering survey for bridge construction, Agria region, Volos



Geotechnical engineering survey for the school buildings of the Peiraeus Municipality



Geotechnical engineering survey for the Art Gallery of the Peiraeus Municipality



Hydrogeological and geotechnical engineering surveys and feasibility study for the selection of a suitable site for the construction of a sanitary waste disposal site in the Municipality of Karpenissi



Geochemical survey of contaminated soil at the storage depot with disused transformers of the Hellenic Public Electricity Authority at Aspropingos Attiki Prefecture



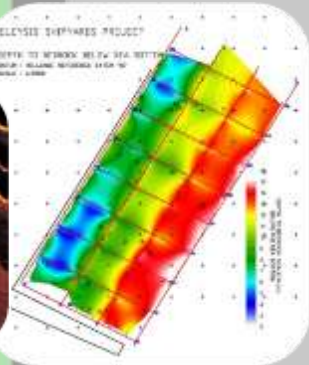
Collaboration with accredited laboratories, such as OMAC Laboratories Ltd (Ireland), a StewartGroup company, and ALS Laboratory Group (Prague, Czechia)



Strategic Environmental Assessment (SEA) study in the framework of the 4<sup>th</sup> Regional Operation Programme in the Peloponnese and Thessaly regions



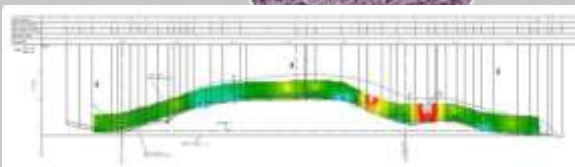
Sub-bottom geophysical profiling, Elefsis shipyards



Geophysical survey along the axis of dams, Achaia and Florina Prefectures



Geophysical survey using seismic methods (Church of St. Nicholas, Krikella, Evritania Prefecture)





**EASYWATCH** Belongs to **IF**

**IFIPCO** Network & Group of

Companies , [www.ifipco.com](http://www.ifipco.com),

Tel.: +302106547227 -

Mobile: +306981

973674; Contact Person: Harris

Ilias J. Fourniadis ([info@ifipco.com](mailto:info@ifipco.com))

r,

[xarisfourniadis@hotmail.com](mailto:xarisfourniadis@hotmail.com)) rep

resents leading instrument manufact

uring firms in Earthquake

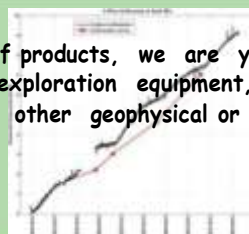
Monitoring ,

Applied Geophysics and Engineerin

g **IFIPCO** business partners:



this market. Thanks to our experience and wide range of products, we are your partner for all your requirements. Whether you need a system of seismic exploration equipment, or inclinometers, piezometers, vibration monitors, pile monitoring systems, or any other geophysical or geotechnical equipment, we have the right solution for you.



#### ➤.....BOREHOLE INCLINOMETERS



Borehole locations



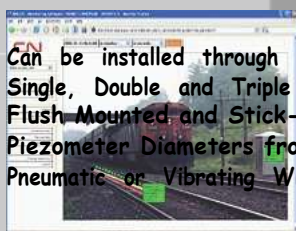
Vibrating Wire  
In-Place Inclinometer

#### ➤.....GEOTECHNICAL PIEZOMETERS

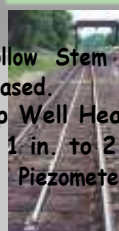
Pneumatic or Vibrating Wire Piezometers can be Installed.

#### ➤.....TRACK MONITORING

Continuous Monitoring. Two Settlement Alarms. Two System Alarms. Graphical Software



- Can be installed through Hollow Stem Augers, Air Rotary Holes, Rock Core Holes.
- Single, Double and Triple Cased.
- Flush Mounted and Stick-Up Well Head Protection.
- Piezometer Diameters from 1 in. to 2 in. Most Commonly Installed.
- Pneumatic or Vibrating Wire Piezometers can be Installed



## □.....EARTHQUAKE & STRUCTURAL MONITORING

Guralp provides passive seismic solutions for a range of upstream and downstream oil & gas applications.

We provide a wide range of products and services to suit our customer's needs. We can provide individual instruments, for example, as part of a pipeline monitoring system. We can also provide a full solution including network design, noise survey, hardware provision, installation & commissioning, data management and processing and ongoing maintenance and field support, for example, as part of a permanent reservoir monitoring solution.

Guralp solutions are used across a wide range of energy industries

including oil & gas, geothermal, hydroelectric, nuclear, coal and wind energy.

- Our solutions provide measurement data to understand physical processes, to optimise energy production and to protect critical infrastructure.

Guralp equipment is operating all over the world, 24 hours a day, 7 days a week helping to secure our ever growing need for energy.

coordination of emergency response activities. Guralp equipment is installed worldwide protecting hundreds of civil engineering structures.

Guralp provides solutions for a range of civil engineering applications spanning buildings, bridges, dams and a wealth of other structures.

Our solutions deliver critical information that is used for planning, design, structural health monitoring, and coordination of emergency response activities. Guralp equipment is installed

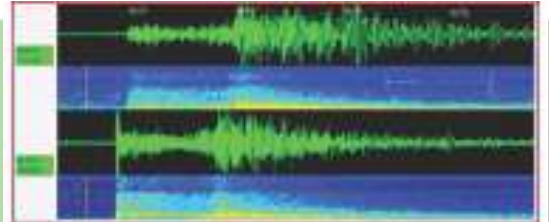
worldwide protecting hundreds of civil engineering structures. Our equipment can monitor both the response of the bridge and the seismic excitation, enabling the structural response to be determined. We also provide site surveys to characterise seismicity in the region of existing and planned new bridges.

Guralp delivers structural health monitoring solutions into a wide variety of applications

s including buildings, bridges and dams. Our systems characterise structural response and ground excitation and we can provide complete site survey services. Our solutions are certified in many countries as accredited structural health monitoring systems.

- Our real-time networks can be used as part of emergency response coordination operations.

## ➤.....Earthquake & structural monitoring



## □.....GEOPHYSICS

Geometrics has supplied the world with rugged, portable, easy-to-use, and technologically-innovative **geophysical instruments** — and responsive, worldwide **customer support**, since 1969.

Our line of **seismographs**, **magnetometers**, and **geolectrical** instruments lets you produce detailed reports, graphs, and maps of the earth's subsurface for:

•Mineral, oil, and gas exploration

•Geohazard studies

•Geohazard studies

•Fault investigations

•Rippability and depth to bedrock

•Unexploded ordnance mapping

•Geotechnical engineering studies

•Archaeology

Learn why colleges and universities, research institutions, government agencies, and exploration firms depend on our **55 years experience**.

## □.....METEOROLOGY

Vaisala MetMan™ Network Software has been designed to meet the immense and diverse demands for managing observation data of national meteorological and hydrological institutes, as well as those of other organisations with environmental monitoring needs.

Vaisala offers a wide range of products for Road Weather Systems, Rail Weather Systems, Rail Temperature systems, Wind Alarm Systems for Railways and Roads.

For more information visit the web site [www.vaisala.com](http://www.vaisala.com)